

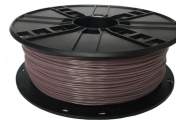
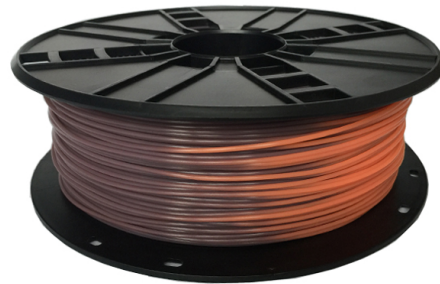


### **Filament, PLA Purple to Pink, 1.75 mm, 1 kg**

3DP-PLA1.75-01-PP

#### **VERSATILE & EASY TO USE**

- PLA (polylactide) is a biodegradable thermoplastic polyester, which is easy to print for variety 3D printers.
- It has no odor, a lower melting point and good flowability, no need to post-treatment.



#### **Features**

- High precision roundness enables higher printing quality
- No bubbles, vivid colors
- Can be applied to a variety of 3D printers

#### **Packaging**

Q'ty in crtn, pcs	8
Crtn volume, CUM	0.036
Crtn weight, kgs	11.46
Individual package size LxWxH:	210x210x85 mm
Carton size LxWxH:	440x440x185 mm
Country of origin	CN
Barcode	8716309094825
Customs code	3916909000

#### **Specifications**

Material: PLA, 1.75 mm diameter  
 Weight: 1 kg/spool (2.2 lbs)  
 Length: approx. 330 m  
 Density at 21.5 °C: 1.25 g/cm<sup>3</sup>  
 Melt Flow Index at 10min, 2.16kg: 5  
 Melt Point: 190 220 °C  
 Heat-Deflection-Temperature at 0.455 MPa: 50 °C  
 Yield Strength at 5mm/min: 45 MPa  
 Impact Strength: 5 KJ/m<sup>2</sup>  
 Ensile Break: 20 %  
 Diameter: 1.75 ± 0.05 mm

#### **System requirements**

A 3D printer with 1.75 mm extruder of temperature around 200 °C, suitable for PLA filament

#### **Certificates**

