

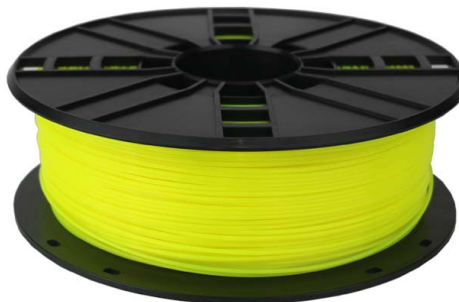


### **PLA Yellow, 1.75 mm, 0.6 kg**

3DP-PLA1.75-02-Y

#### **VERSATILE & EASY TO USE**

- PLA (polylactide) is a biodegradable thermoplastic polyester, which is easy to print for variety 3D printers.
- It has no odor, a lower melting point and good flowability, no need to post-treatment.



#### **Características**

- High precision roundness enables higher printing quality
- No bubbles, vivid colors
- Can be applied to a variety of 3D printers
- 0.6 kg spool

#### **Embalaje**

Qtd por caja, pcs	12
Volumen caja, M3	0.042
Peso caja, kgs	10.94
Medidas cajas individuales LxWxH:	174x174x95 mm
Medidas caja LxWxH	370x365x310 mm
Pais de origen	CN
Código de barras	8716309090681
codigo de aduanas	3916909000

#### **Especificaciones**

Material: PLA, 1.75 mm diameter  
 Weight: 0.6 kg/spool  
 Density at 215°C: 1.24 g/cm<sup>3</sup>  
 Melt Flow Index at g/10min, 190°C/ 2.16kg: 6  
 Melt Point: 190 220 °C  
 Heat-Deflection-Temperature at 0.455 MPa: 50 °C  
 Yield Strength at 5mm/min: 62 MPa  
 Impact Strength: 4.2 KJ/m<sup>2</sup>  
 Ensil Break: 15 %  
 Diameter: 1.75 ± 0.05 mm

#### **Requisitos del sistema**

A 3D printer with 1.75 mm extruder of temperature around 200 °C, suitable for PLA filament

#### **Certificados**

