

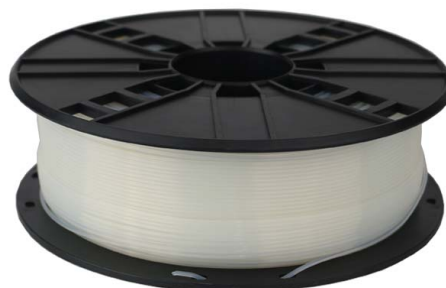


PLA Natural, 1.75 mm, 0.6 kg,

3DP-PLA1.75-02-NAT

VERSATILE & EASY TO USE

- PLA (polylactide) is a biodegradable thermoplastic polyester, which is easy to print for variety 3D printers.
- It has no odor, a lower melting point and good flowability, no need to post-treatment.



Features

- High precision roundness enables higher printing quality
- No bubbles, vivid colors
- Can be applied to a variety of 3D printers
- 0.6 kg spool

Packaging

Q'ty in crtn, pcs	12
Crtn volume, CUM	0.039
Crtn weight, kgs	10.92
Individual package size LxWxH:	210x210x90 mm
Carton size LxWxH:	350x360x310 mm
Country of origin	CN
Barcode	8716309090643
Customs code	3916909000

Specifications

Material: PLA, 1.75 mm diameter
 Weight: 0.6 kg/spool
 Density at 215°C: 1.24 g/cm³
 Melt Flow Index at g/10min, 190°C/ 2.16kg: 6
 Melt Point: 190 220 °C
 Heat-Deflection-Temperature at 0.455 MPa: 50 °C
 Yield Strength at 5mm/min: 62 MPa
 Impact Strength: 4.2 KJ/m²
 Ensil Break: 15 %
 Diameter: 1.75 ± 0.05 mm

System requirements

A 3D printer with 1.75 mm extruder of temperature around 200 °C, suitable for PLA filament

Certificates

