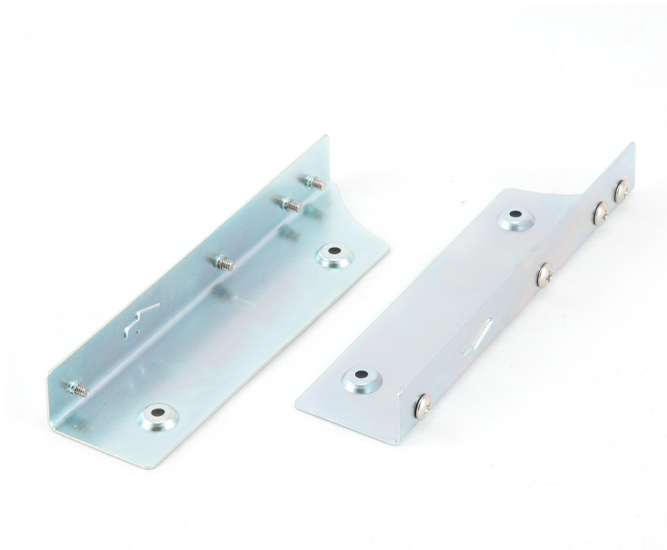




Metal mounting frame for 2.5" SSD to 3.5" bay

MF-321



Features

- Allows to mount 2.5 inch SSD (solid state drive) into 3.5 inch internal computer bay

Specifications

Supports any 2.5" HDD
Supports 3.5 inch bay inside a computer for installation
Material: metal, 0.8mm
Dimensions: 119.6x31.8x15.6mm

Packaging

Q'ty in crtn, pcs
Crtn volume, CUM
Crtn weight, kgs
Individual package size LxWxH:
Carton size LxWxH:
Country of origin
Barcode
Customs code

200
0.013
14
120x35x20 mm
300x220x200 mm
CN
8716309048408
8473308000

Certificates

