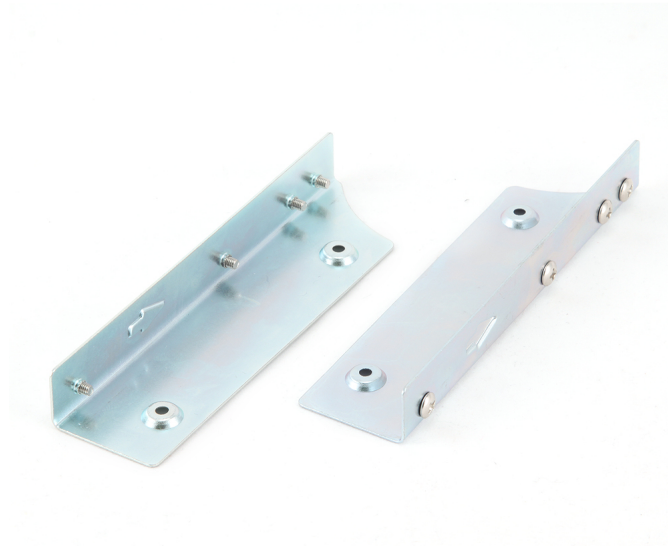




Metal mounting frame for 2.5" SSD to 3.5" bay

MF-321



Features

- Allows to mount 2.5 inch SSD (solid state drive) into 3.5 inch internal computer bay

Specifications

Supports any 2.5" HDD
 Supports 3.5 inch bay inside a computer for installation
 Material: metal, 0.8mm
 Dimensions: 119.6x31.8x15.6mm

Packaging

Q'ty in crtn, pcs
 Crtn volume, CUM
 Crtn weight, kgs
 Individual package size LxWxH:
 Carton size LxWxH:
 Country of origin
 Barcode
 Customs code

200
 0.013
 14
 120x35x20 mm
 300x220x200 mm
 CN
 8716309048408
 8473308000

Certificates

