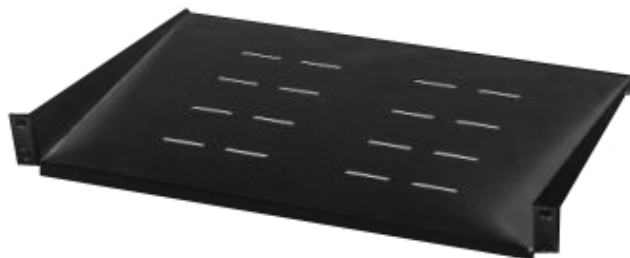




### **19" Fixed Shelf 440mm depth**

19C-Shelf



#### **Features**

- Fixed Shelf 440 mm depth

#### **Specifications**

Width: 19"

#### **Packaging**

Q'ty in crtn, pcs  
Crtn volume, CUM  
Crtn weight, kgs  
Individual package size LxWxH:  
Carton size LxWxH:  
Country of origin  
Barcode  
Customs code

5  
0.083  
13.75  
470x500x60 mm  
510x325x500 mm  
CN  
8716309021265  
8522900090

#### **Certificates**

