

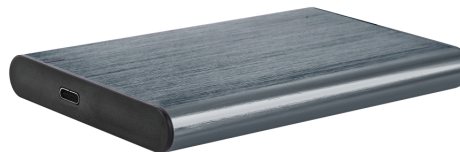


USB 3.1 2.5" enclosure with USB Type-C port, brushed aluminum, grey

EE2-U3S-6-GR

GIGABYTES IN YOUR POCKET

- SuperSpeed USB 3.1 data transfer
- Suitable for most 2.5" SATA HDD's and SSD's
- Practical tool-free design, no need for screws



Features

- 2.5" SuperSpeed USB 3.1 enclosure with USB Type-C port
- Supports SATA 2.5" HDD or SSD up to 9.5 mm thickness (max. 4 TB)
- Durable brushed aluminum body with LED status indicator
- Tool-free design for easy and quick installation
- Plug & Play

Packaging

Q'ty in crtn, pcs
Crtn volume, CUM
Crtn weight, kgs
Individual package size LxWxH:
Carton size LxWxH:
Country of origin
Barcode
Customs code

60
0.042636
10.58
100x160x100 mm
380x330x340 mm
CN
8716309114271
8473308000

Package contents

HDD enclosure
USB AM-CM cable, 0.5 m
Storage pouch
User manual

Specifications

Interface: USB type-C (female), Superspeed USB 3.1 Gen.1 (backward compatible with USB 3.0/2.0/1.1)
Supported drives: 2.5" Serial ATA HDD (max. 4 TB) of 7-9.5 mm thickness
UASP v.1 support (USB Attached SCSI Protocol)
Data transfer rate: Max. 6 Gb/s
Chipset: JMS576
Cable: USB 3.1 AM-CM cable
Material: aluminum (body) and plastic (tray)
Product dimensions: 122 x 78 x 14 mm
Product net weight: 80 g

System requirements

Windows Windows 7/8/10
A free USB port (for the best performance USB 3.x port is required)

Certificates

