

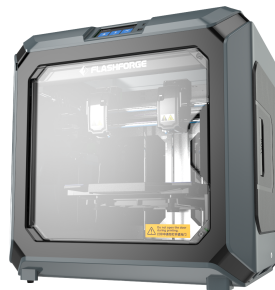


### Flashforge Creator3 3D Printer

FF-3DP-2NC3-01

#### FRIENDLY & EASY TO USE

- Independent Dual-Extruder FDM printer
- Equipped with many versatile features, the Creator3 enables you to create practical & interesting objects for all your business or educational needs.
- Modular design dual extruder more possibilities, easier replacement
- Versatile, closable printing chamber
- Includes easy to use FlashPrint Slicing Software



#### Eigenschaften

- Independent Dual-Extruder
- Nozzle Temperature Reaches to 300°
- Filament detecting sensor
- Very Large Build Size
- Easy Removal Nozzle
- Print Preview Function (Gcode)
- Multi-Language Package for Multilingual Operation
- Fully-Closed Design & Auto-Temperature Control System
- Self-Developed Slicing Software with Copyright
- Heated Bed
- CE FCC ROHS Certificates

#### Verpackungsdetails

Stückzahl pro Karton	1
Karton Volumen, m³	0.3441
Kartongewicht, kg	52.04
Abmessungen Verpackung (LxBxH):	740x610x730 mm
Abmessungen Umkarton (LxBxH):	750x620x740 mm
Ursprungsland	CN
EAN Code	8716309108331
Zolltarif-Nr.:	8477809990

#### Lieferumfang

3D Printer  
Filament spool  
Quick start guide  
Power cable  
Metal scraper  
USB stick  
Waste box  
PTFE tube  
Unclogging pin tool  
Wrench  
Screwdriver  
Allen wrench  
Glue stick

Copyright © 2009–2021, Gembird Software Ltd.

#### Spezifikationen

Principle: FDM

Build size: up to 280mm x 250mm x 200 mm

Filament: PLA/ABS/TPU/PVA/HIPS/PETG/WPC/Nylon spool, 1.75mm

Print precision: ±0.10 mm

Positioning precision: Z axis 0.0025 mm, XY axis 0.011 mm

Layer thickness: 0.05 0.4 mm

Nozzle diameter: 0.40 mm

Extruder temperature: up to 300 °C

Connection USB stick / Ethernet / WIFI

Operation system Win xp/Vista/7/8/10?Mac OS?Linux

Input power: 100 240V AC, up to 500 W

#### Systemvoraussetzungen

Windows XP/Vista/7/8/10; Mac OS X, Linux

Connection: USB drive, LAN, WiFi

#### CE-Erklärung

