

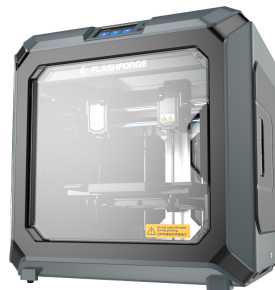


Flashforge Creator3 3D Printer

FF-3DP-2NC3-01

FRIENDLY & EASY TO USE

- Independent Dual-Extruder FDM printer
- Equipped with many versatile features, the Creator3 enables you to create practical & interesting objects for all your business or educational needs.
- Modular design dual extruder more possibilities, easier replacement
- Versatile, closable printing chamber
- Includes easy to use FlashPrint Slicing Software



Características

- Independent Dual-Extruder
- Nozzle Temperature Reaches to 300?
- Filament detecting sensor
- Very Large Build Size
- Easy Removal Nozzle
- Print Preview Function (Gcode)
- Multi-Language Package for Multilingual Operation
- Fully-Closed Design & Auto-Temperature Control System
- Self-Developed Slicing Software with Copyright
- Heated Bed
- CE FCC ROHS Certificates

Embalaje

Qtyd por caja, pcs	1
Volumen caja, M3	0.3441
Peso caja, kgs	52.04
Medidas cajas individuales LxWxH:	740x610x730 mm
Medidas caja LxWxH	750x620x740 mm
País de origen	CN
Código de barras	8716309108331
codigo de aduanas	8477809990

Contenido de la caja

3D Printer
Filament spool
Quick start guide
Power cable
Metal scraper
USB stick
Waste box
PTFE tube
Unclogging pin tool
Wrench
Screwdriver
Allen wrench
Glue stick

Copyright © 2009–2021, Gembird Software Ltd.

Especificaciones

Principle: FDM

Build size: up to 280mm x 250mm x 200 mm

Filament: PLA/ABS/TPU/PVA/HIPS/PETG/WPC/Nylon spool, 1.75mm

Print precision: ±0.10 mm

Positioning precision: Z axis 0.0025 mm, XY axis 0.011 mm

Layer thickness: 0.05 0.4 mm

Nozzle diameter: 0.40 mm

Extruder temperature: up to 300 °C

Connection USB stick / Ethernet / WIFI

Operation system Win xp/Vista/7/8/10?Mac OS?Linux

Input power: 100 240V AC, up to 500 W

Requisitos del sistema

Windows XP/Vista/7/8/10; Mac OS X, Linux

Connection: USB drive, LAN, WiFi

Certificados

