

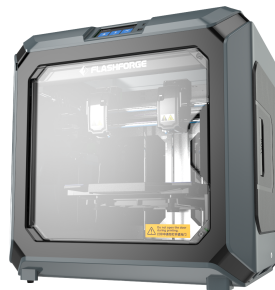


### Flashforge Creator3 3D Printer

FF-3DP-2NC3-01

#### FRIENDLY & EASY TO USE

- Independent Dual-Extruder FDM printer
- Equipped with many versatile features, the Creator3 enables you to create practical & interesting objects for all your business or educational needs.
- Modular design dual extruder more possibilities, easier replacement
- Versatile, closable printing chamber
- Includes easy to use FlashPrint Slicing Software



#### Features

- Independent Dual-Extruder
- Nozzle Temperature Reaches to 300?
- Filament detecting sensor
- Very Large Build Size
- Easy Removal Nozzle
- Print Preview Function (Gcode)
- Multi-Language Package for Multilingual Operation
- Fully-Closed Design & Auto-Temperature Control System
- Self-Developed Slicing Software with Copyright
- Heated Bed
- CE FCC ROHS Certificates

#### Packaging

Q'ty in crtn, pcs	1
Crtn volume, CUM	0.3441
Crtn weight, kgs	52.04
Individual package size LxWxH:	740x610x730 mm
Carton size LxWxH:	750x620x740 mm
Country of origin	CN
Barcode	8716309108331
Customs code	8477809990

#### Package contents

3D Printer  
Filament spool  
Quick start guide  
Power cable  
Metal scraper  
USB stick  
Waste box  
PTFE tube  
Unclogging pin tool  
Wrench  
Screwdriver  
Allen wrench  
Glue stick

#### Specifications

Principle: FDM  
Build size: up to 280mm x 250mm x 200 mm  
Filament: PLA/ABS/TPU/PVA/HIPS/PETG/WPC/Nylon spool, 1.75mm  
  
Print precision:  $\pm 0.10$  mm  
Positioning precision: Z axis 0.0025 mm, XY axis 0.011 mm  
Layer thickness: 0.05 0.4 mm  
Nozzle diameter: 0.40 mm  
Extruder temperature: up to 300 °C  
Connection USB stick / Ethernet / WIFI  
Operation system Win xp/Vista/7/8/10?Mac OS?Linux  
Input power: 100 240V AC, up to 500 W

#### System requirements

Windows XP/Vista/7/8/10; Mac OS X, Linux  
Connection: USB drive, LAN, WiFi

#### Certificates

