

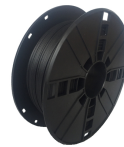
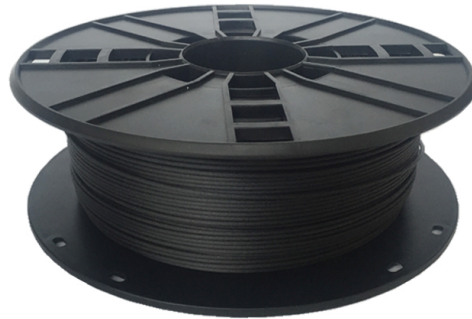


### **PLA Filament Carbon, 1.75 mm, 1 kg**

3DP-PLA1.75-02-CARBON

#### **VERSATILE & EASY TO USE**

- PLA (polylactide) is a biodegradable thermoplastic polyester, which is easy to print for variety 3D printers.
- It has no odor, a lower melting point and good flowability, no need to post-treatment
- The surface shows a metal texture after polishing.
- Carbon fiber is a mixture of carbon and PLA polymer.



#### **Features**

- High modulus Carbon Fiber excellent stiffness
- Large intensity, small shrinkage rate
- Makes the object of more texture and intensity

#### **Packaging**

Q'ty in crtn, pcs	8
Crtn volume, CUM	0.036
Crtn weight, kgs	11.66
Individual package size LxWxH:	210x210x85 mm
Carton size LxWxH:	440x440x185 mm
Country of origin	CN
Barcode	8716309094924
Customs code	3916909000

#### **Specifications**

Material: PLA based, Carbon filled, 1.75 mm diameter  
 Weight: 0.8 kg/spool (1.76 lbs)  
 Length: approx. 260 m  
 Density at 21.5 °C: 1.32 g/cm<sup>3</sup>  
 Melt Flow Index at g/10min 200°C/2.16kg: 5.5  
 Melt Point: 190 210 °C  
 Heat-Deflection-Temperature: 58°C  
 Tensile Strength: 70 MPa  
 Impact Strength: 30 KJ/m<sup>2</sup>  
 Elongation at Break: 3.5 %  
 Diameter: 1.75 ± 0.05 mm

#### **System requirements**

A 3D printer with 1.75 mm extruder of temperature around 200 °C, suitable for PLA filament

#### **Certificates**

